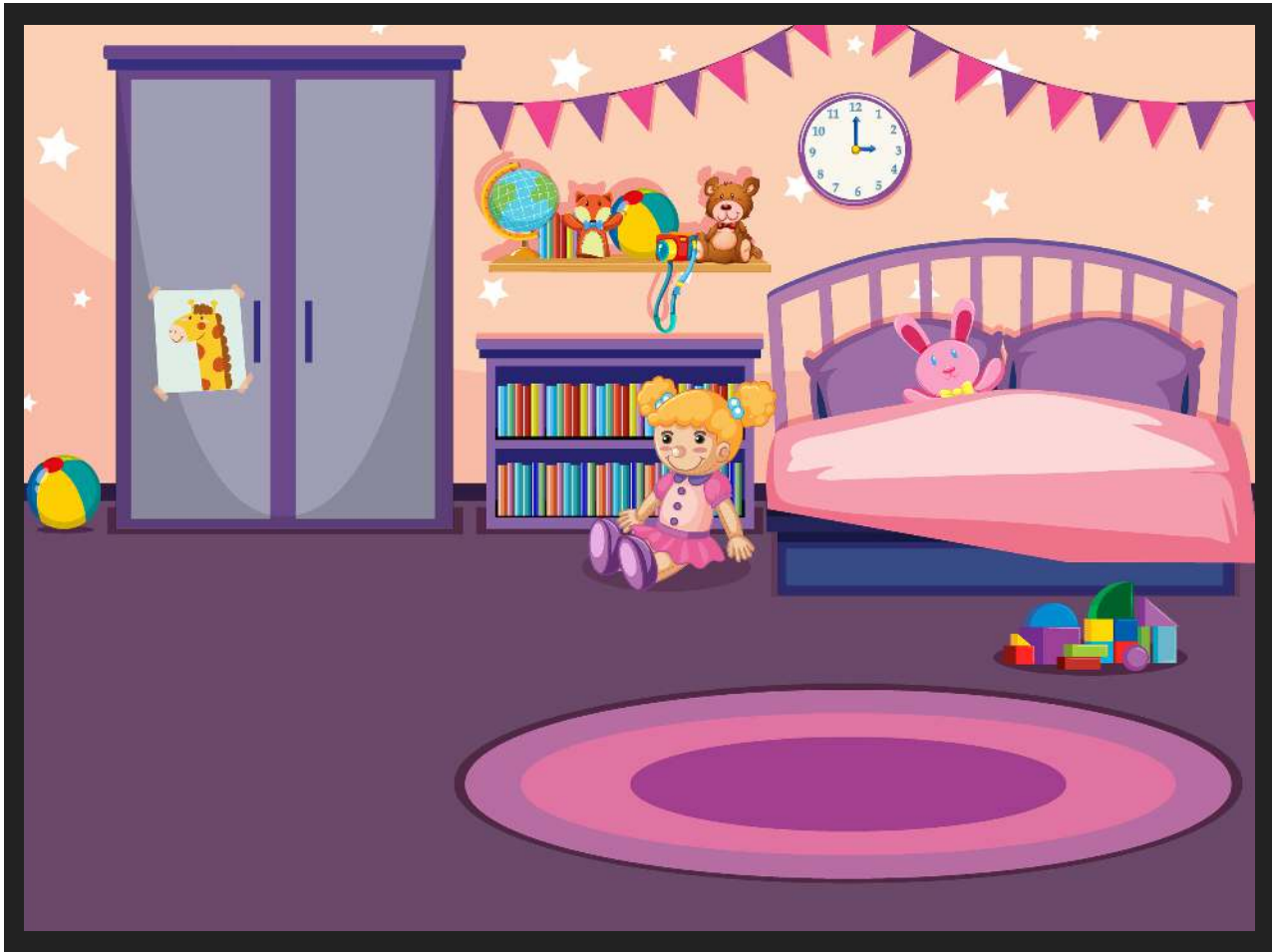


Prepositions



TRUE OR FALSE?

Look at the picture and read the sentences below.



1. There is a doll on the floor. (True / False)
2. There are books on the bookshelf. (True / False)
3. The rabbit is in front of the ball. (True / False)
4. There is a ball next to the wardrobe. (True / False)
5. The clock is under the bed. (True / False)
6. The rabbit is in the bed. (True / False)
7. The bookshelf is between the bed and the wardrobe. (True / False)
8. The globe is on the shelf. (True / False)
9. The blocks are on the rug. (True / False)
10. The doll is behind the bookshelf. (true / False)